

INSIGHT. INSIDE. INTEVA.

Company Profile



About Inteva Products, LLC

Inteva Products is a leading global supplier offering value-based innovation and environmentally-friendly products that enhance quality and performance. Inteva serves original equipment manufacturers in six key markets: automotive, commercial vehicle, defense, marine, consumer and industrial. Focused on delivering high-value quality, on time and on budget, Inteva has global resources for engineering, manufacturing and customer service for Closure Systems, Interiors Systems, Motors and Electronics, and Roof Systems. Inteva is focused on sustained global growth, providing excellent customer service and being a best place to work for employees.

Website

www.intevaproducts.com

Revenue

2011 sales of \$2.5 billion, 50% of sales outside of The Americas

Headquarters

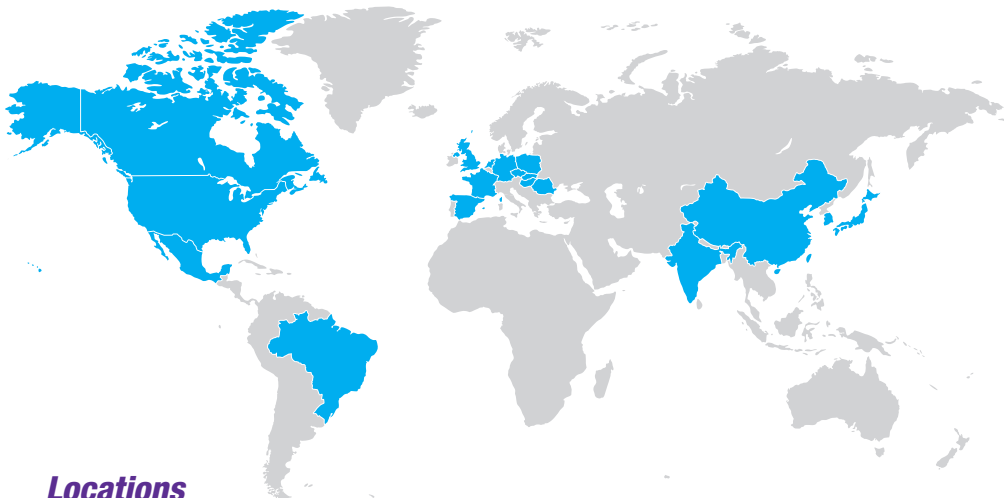
1401 Crooks Road
Troy, MI 48084 USA
Tel: +1.248.655.8886

Leadership

Lon Offenbacher
President & CEO

Team Members

8,000 team members in 18 countries



Locations

30 manufacturing sites and 15 engineering technical centers in 18 countries operate across four continents: North America, South America, Europe and Asia.

Customers

Inteva serves over 50 customers in more than 40 countries. Major customers include the world's leading global automakers and regional OEMs. Key industries served include: automotive, commercial vehicle, defense, marine, consumer and industrial.

Major Product Lines

- Interior Systems
- Closure Systems
- Roofs Systems
- Motors & Electronics

For more information about Inteva, please visit www.intevaproducts.com, email us at info@intevaproducts.com or call **+1.248.655.8886**.

INSIGHT. INSIDE. INTEVA.

Product Overview



Closure Systems

Inteva's Closure Systems product line encompasses Latch Systems and Door Systems with high value to global customers. Inteva's Latch Systems portfolio includes door latches, compartment latches, associated strikers, and electronic actuators that offer competitive functionality, robustness and performance with minimized weight, package size and cost. In Door Systems, Inteva designs, engineers and manufactures products that range from window regulators to the latest fully integrated composite door modules. Inteva's door modules provide our customers with a highly engineered product that incorporates multiple features and functions into an integrated unit, resulting in improved reliability and reduced assembly complexity.



Interior Systems

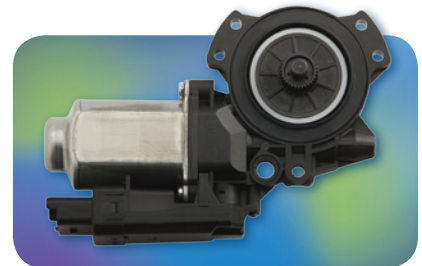
Inteva's Interior Systems product line includes a full range of components and modules for vehicle interiors, from instrument panels, consoles, and door trim to cockpits and headliners. Inteva designs, engineers and manufactures quality, mass-efficient interiors with a focus on high-value design and innovative materials and processes that reduce environmental impact. Inteva provides full design development and system integration services; combined with complete supply chain management, build-in-line sequencing and end-of-line function testing capabilities providing customers with optimized vehicle assembly efficiency.

Roof Systems

Inteva designs, engineers and manufactures sunroofs, panoramic roofs and full roof modules to meet customer demands for low mass, low noise levels and optimum headroom with maximized vehicle body strength. All can feature electric or manual operation with integrated wind deflectors, sunshade or roller blind systems. Inteva roof systems are available in a full range of opening sizes and options. Inteva modular roof systems reduce complexity for OEMs while providing increased styling flexibility.

Motors & Electronics

With an advanced in-house development capability, Inteva's Motors and Electronics product line offers a range of robust and efficient electric motors for automotive and light duty consumer applications. Inteva incorporates advanced electronic functionality into a light weight, size-optimized package.



Products and Capabilities that Deliver Value

Inteva holds a strong commitment to the development of new materials, value-based innovations, and advanced process technologies to better serve our customers. Our advanced development capabilities include in-house design, rapid prototyping, testing resources and R & D centers of excellence on four continents. Inteva creates patent winning solutions focused on safety, comfort, mass reduction, environmental performance, cost controls and quality.



Legacy of Excellence

Inteva celebrates 140 years of engineering excellence and manufacturing mastery in 2012. Using insight and ingenuity, Inteva team members continuously improve design and processes to deliver high quality parts on time and on budget. Inteva is a trusted supply partner with a proud heritage of first-to-market innovation.